

# ***BarTender Enterprise Licensing***

***Understanding BarTender's Licensing System  
and Configuring the Seagull Scientific License Server***



*Seagull Scientific, Inc  
1616 148<sup>th</sup> Ave. S.E.  
Bellevue, WA 98007-6848  
USA*

*TEL: 425-641-1408  
FAX: 425-641-1599  
Sales@seagullscientific.com  
www.seagullscientific.com*

***Europe***  
*C/ Velázquez, 15-6º-Izq.  
28001 Madrid  
Spain*

*TEL: +34 91 435 2525  
FAX: +34 91 578 0506  
eurosales@seagullscientific.com*

All screen images used in this document are for illustrative purposes only, and are intended to provide an example of the screen only. Screens may vary depending on the Edition of the product being used.

Seagull Scientific, Inc. has made every effort to ensure the accuracy of information contained within this document. However, Seagull Scientific, Inc. makes no warranties with respect to this document and disclaims any implied warranties of merchantability or fitness for a particular purpose. The information in this document is subject to change without notice. Seagull Scientific, Inc. assumes no responsibility for errors that may appear in this document. All persons named in this document are fictitious. No connection between anyone living or dead is implied or intended.

All trademarks acknowledged.

In North America:

Seagull Scientific, Inc  
1616 148<sup>th</sup> Ave. S.E.  
Bellevue, WA 98007-6848  
USA

In Europe:

C/ Velázquez, 15-6°-Izq.  
28001 Madrid  
Spain

*Copyright © October, 2003. Seagull Scientific, Inc.*

*All rights reserved. No part of the contents of this document may be reproduced or transmitted in any form or by any means without the written permission of Seagull Scientific, Inc. Information in this document is subject to change without notice and does not represent a commitment on the part of Seagull Scientific, Inc.*

*BarTender is a registered trademark of Seagull Scientific, Inc.*

*HASP is a registered trademark of Aladdin Knowledge Systems, Ltd.*

Version: 2003-10-28 11:32

# Contents

<b>INTRODUCTION .....</b>	<b>4</b>
<b>HOW ENTERPRISE LICENSING WORKS .....</b>	<b>6</b>
<i>Overview.....</i>	<i>6</i>
<i>LANs and Routers .....</i>	<i>7</i>
WHAT HAPPENS WHEN BARTENDER PRINTS.....	7
WHAT HAPPENS WHEN A LICENSE IS EXCEEDED .....	9
<i>Printer Limit Exceeded .....</i>	<i>9</i>
<i>User Limit Exceeded .....</i>	<i>9</i>
<b>RUNNING THE SEAGULL LICENSE SERVER.....</b>	<b>10</b>
<i>SLS Run as an Application.....</i>	<i>10</i>
<i>SLS Run as a System Service .....</i>	<i>10</i>
<i>SLS Remote Administration Interface .....</i>	<i>10</i>

## Introduction

The Enterprise Edition of BarTender is intended for companies with complex label printing needs, including the need to print to multiple printers, the need to print dynamic data from a variety of databases, and the need for automation of BarTender from within other Windows applications.

Seagull Scientific, Inc. simplifies the licensing of Enterprise BarTender by allowing an unlimited number of users per license. Additionally, each license package includes printer licenses. A *printer license* is the number of printers that can be used by BarTender to print labels. A printer can be connected to a local computer or located on the Local Area Network (LAN). Each printer is distinguished from other printers by its location, model, and port.

Seagull Scientific sells Enterprise licenses in package for sizes of 3, 5, 10, 20, 40, and "unlimited" printers. All of these licenses allow an unlimited number of users. Also available is a "print-only" Enterprise Edition of BarTender that is licensed for one user and three printers.

The Seagull License Server (SLS) is Seagull Scientific's tool for monitoring and enforcing printer licenses. It will do the following:

- ◆ Keep track of the number of printers being used by BarTender.
- ◆ Keep track of the number of copies of BarTender running on the user's network.
- ◆ Warn users when the site's licenses are being exceeded.
- ◆ Run, unattended, on any computer on the LAN.
- ◆ Monitor BarTender clients over a LAN.

SLS uses a HASP security key, supplied by Seagull Scientific, attached to the computer where SLS is running. This key holds details about the license, including the maximum number of users and printers allowed. Each time a BarTender starts a print job, SLS keeps track of the total number of printers being used and the number of current users. If a print job exceeds either limit, then the user is notified of the license violation and is given the choice of cancelling the print job or printing in

“demonstration mode”, in which one character in each bar code and text field is changed.

Thus, SLS does not communicate with the printer or physically print the label. Its role is to grant or withhold permission to print.

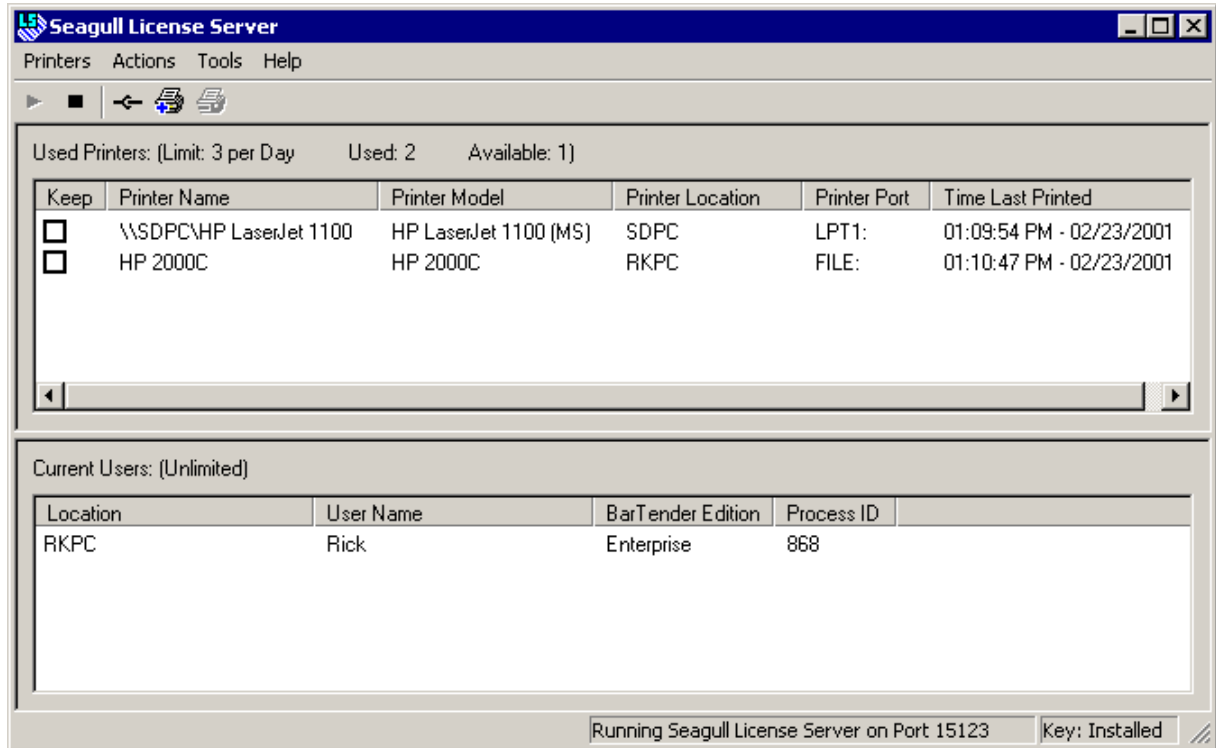


Figure 1: The Seagull License Server Main Screen

## How Enterprise Licensing Works

### Overview

Figure 2 shows a simple network configuration with Enterprise BarTender in use. SLS is installed on a server, or on any computer on the LAN, and then BarTender is installed on workstations.

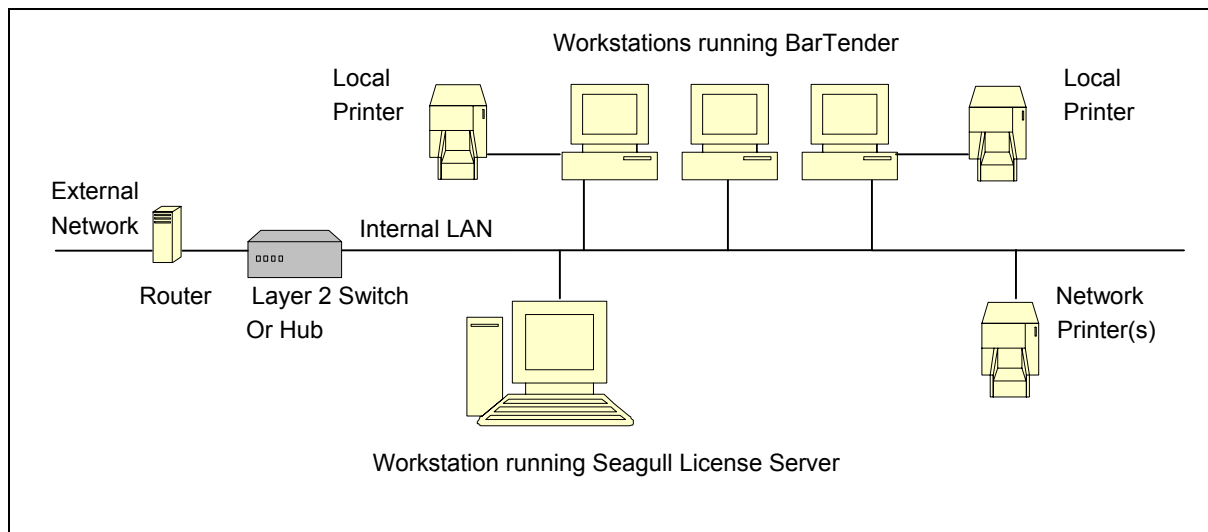
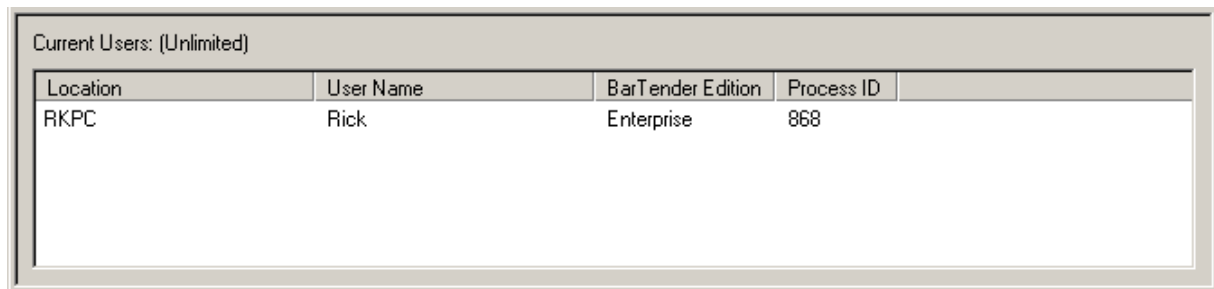


Figure 2: Example LAN Configuration using BarTender with SLS

When SLS is started, it reads the license file to find the total number of licensed printers and licensed users, and then begins monitoring for BarTender connections and print jobs.

When a BarTender is started, it looks for a Seagull License Server running on the network. If BarTender finds SLS, it will send a "Here I am" message and SLS will add that BarTender to the list of current users. A user running multiple copies of BarTender on one computer will only be counted as one user.



Location	User Name	BarTender Edition	Process ID
RKPC	Rick	Enterprise	868

*Figure 3: Current Users List*

If BarTender does not find SLS on the network or if BarTender is in violation of the user or printer license, it will warn the user at print time and, if directed to, will print a demonstration label in which one character in each bar code or text field will be changed.

## LANs and Routers

BarTender and SLS will only work together if they are on the same LAN. If a BarTender workstation is separated from SLS by a network router, then BarTender and SLS cannot see each other. A separate license must be purchased for each LAN.

## What Happens When BarTender Prints

When BarTender and SLS are properly configured to work with each other, the following events occur when BarTender starts a print job.

1. BarTender sends the label immediately to the print queue using the local or network printer driver installed on the workstation.
2. BarTender sends a message to SLS telling it the printer's name, model, location and printer port.

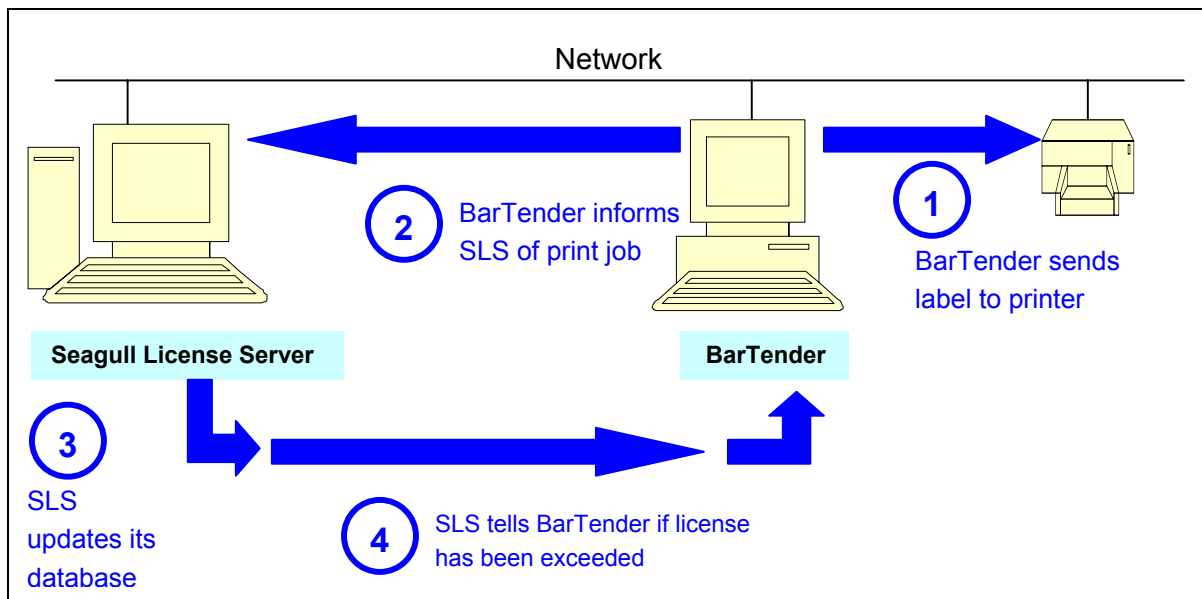


Figure 4: Sequence of Events when BarTender Prints

3. SLS adds the printer to the **Used Printer** list if the printer is not already in the list. If it is in the list, then SLS updates its **Time Last Printed** field.

Keep	Printer Name	Printer Model	Printer Location	Printer Port	Time Last Printed
<input type="checkbox"/>	Shipping Printer	Datamax W-8306	SNPC	c:\output.pn	06:20:25 AM - 02/26/2001
<input type="checkbox"/>	Intermec 3100	Intermec 3100	SNPC	c:\output.pn	06:20:27 AM - 02/26/2001
<input type="checkbox"/>	Datamax DMX 400	Datamax DMX 400	SNPC	c:\output.pn	06:20:25 AM - 02/26/2001
<input type="checkbox"/>	\\FP01\ZPL105S	Zebra 105S (203 dpi)	FP01	\\FP01\ZPL105S	10:34:59 AM - 02/25/2001
<input type="checkbox"/>	EasyCoder 4420	EasyCoder 4420	D95NTSP4	COM1:	10:39:22 AM - 02/26/2001

Figure 5: Used Printers List

4. SLS adjusts the total printers used and printers available. If the new total of used printers exceeds the limit, then SLS informs BarTender of the license violation. (See the section *What Happens when a License is Exceeded* for more details.)

Once a printer is in the **Used Printers** list, it will stay in the list until either it goes unused for 24 hours, at which point it is automatically removed, or a user takes it out with the **Remove Printer** function.

**Note:** SLS uses the printer model, location, and port as its criteria for distinguishing printers. Thus, the printer name is not the criterion.

## What Happens When a License is Exceeded

### Printer Limit Exceeded

If the number of used printers has reached the licensed limit and SLS receives a message that BarTender wants to print to a printer not already in the **Used Printer** list, it will notify BarTender that the license has been exceeded. BarTender will then give the user the choice of cancelling the print job or continuing in demonstration mode in which one character per printed bar code or text field will be changed.

If BarTender has been flagged as being in violation of the license from a previous print job (or, when it started up, BarTender could not find SLS), then it will seek permission to print the label from SLS before sending its next job to a print queue.

### User Limit Exceeded

Although most license packages for Enterprise BarTender allow unlimited users, the special "print-only" version of Enterprise BarTender allows only one user and three printers. A user running multiple copies of BarTender on one computer will only be counted as one user.

If the limit of allowed current users has been reached and another user launches BarTender from a different computer and tries to print from it, SLS will notify BarTender that the license has reached its limit. BarTender will warn the user and then give the user the choice of cancelling the print job or continuing in demonstration mode in which one character per printed bar code or text field will be changed. Users are automatically dropped from the list when the BarTender exits.

## Running the Seagull License Server

SLS runs, unattended, as an application or as a Windows NT/2000 system service. Moreover, SLS can perform remote administration for another SLS running on the network.

### SLS Run as an Application

SLS can be started and run as a standard Windows desktop application on any Windows 95/98/ME/NT/2000 machine. When run in this mode, SLS will exit when the user closes the application or logs out.

### SLS Run as a System Service

On Windows NT or 2000, users also have the option of running SLS as an operating system service. When run in this way, it can be configured to run automatically when the operating system starts. There is no need for any user to log onto the machine. It is not necessary that the user interface of SLS be running at all.

### SLS Remote Administration Interface

The SLS application can be run as a remote administration interface to a copy of SLS already running somewhere else on the network. For more information, see the online help in SLS.